

# Specification Comparison Chart

Test Parameter	9000 Series AAMA 2603-17	10000 Series AAMA 2604-17	11000 Series AAMA 2605-17
	1-Year	5-Year	10-Year
Pretreatment	Multi stage cleaning and pretreatment system	Multi stage cleaning and pretreatment system, chrome and non-chrome	Multi stage cleaning and pretreatment system, chrome and non-chrome
Pretreatment Coating Weight	Non specified	Chrome 30mg/ft <sup>2</sup> minimum	Chrome 40mg/ft <sup>2</sup> minimum
Film Thickness	2-4 mils	2-4 mils	2-4 mils
Repairability	See film touch up and repair procedures		
Sealant Compatibility	Meet performance requirements of AAMA 800 sealant specification		
Hardness	H-2H	H-2H	H-2H
	Values represent TCI product characteristics		
Dry Adhesion	No loss of adhesion		
Wet Adhesion	No loss of adhesion		
Boiling Water Adhesion	No loss of adhesion		
Impact Resistance	No film removal on min. 3 mm deformation		
Abrasion Resistance	N/A	Abrasion coefficient $\geq$ 20 min	Abrasion coefficient $\geq$ 40 min
Muriatic Acid	No change after 15 minute spot test		
Mortar Resistance	No adhesion loss or appearance change after 24 hour pat test		
Nitric Acid Resistance	N/A	5 DE max color change after 30 minute vapor exposure	
Detergent	No change or adhesion loss after 72 hour immersion		
Window Cleaner	N/A	No change or adhesion loss after 24 hour spot test	
Humidity Resistance	1,500 hours: no more than "few" blisters size 8, figure #4 ASTM D 714	3,000 hours: no more than "few" blisters size 8, figure #4 ASTM D 714	4,000 hours: no more than "few" blisters size 8, figure #4 ASTM D 714
Corrosion Resistance	1,500 hours of salt solution: minimum rating of 7 on scribe or cut edges: minimum blister rating of 8 in the field (ASTM D 1654) ASTM D 714	3,000 hours of salt solution: minimum rating of 7 on scribe or cut edges: minimum blister rating of 8 in the field (ASTM D 1654)	2,000 hours of cyclic corrosion per ASTM G85, Annex 5: minimum rating of 7 on scribe or cut edges: Minimum blister rating of 8 in the field (ASTM D 1654)
Outdoor Resistance	1 year south Florida: maintain film integrity; no adhesion loss, slight chalking or fading	5 years south Florida: maintain film integrity; 5 DE (Hunter) maximum color change; chalking (ASTM D 4214) $\leq$ 8; gloss retention $\geq$ 30%; erosion resistance less than 10% film loss	10 years south Florida: maintain film integrity; 5 DE (Hunter) maximum color change; chalking (ASTM D 4214) $\leq$ 8; gloss retention $\geq$ 50%; erosion resistance less than 10% film loss

For more information please contact your TCI Sales Representative.

## 9000 Series

### AAMA 2603 Specification

TCI 9000 Series Polyester Systems have the broadest formulating range in color and gloss, and many will meet or exceed AAMA 2603 performance requirements. Products in this series have a 60° gloss range of 5-90° + and meet many decorative and functional requirements for chemical resistance, physical properties, color, gloss, and weatherability. High chroma colors are also available. Typical uses include aluminum extrusions, playground equipment, agricultural equipment, and machinery.



## 10000 Series

### AAMA 2604 Specification

The TCI 10000 Series Superior Exterior Performance Polyester Systems are formulated to meet the requirements of the AAMA 2604 specification. Products in this series have a 60° gloss range of 5-90° + and are available in a wide selection of colors. Proper chrome or non-chrome pretreatment is critical for product performance. Chromium Chromate or chromium phosphate coating weights should be a minimum of 30 mg/ft<sup>2</sup>. Alternative chrome and/or non-chrome conversion coatings should be maintained according to supplier's recommendations. A TCI technical representative must audit each application system to ensure products will meet the 2604 specification.



## 11000 Series

### AAMA 2605 Specification

The TCI 11000 Series Highest Exterior Performance Organic Systems are formulated to meet the requirements of the AAMA 2605 specification. Products in this series, with the exception of anodized products, have a 60° gloss range of 25-70° + and are available in many colors. Proper amorphous chromium phosphate or amorphous chromate pretreatment is critical for product performance. Chromium chromate or chromium phosphate coating weights should be a minimum of 40 mg/ft<sup>2</sup>. Alternative chrome and/or non-chrome conversion coatings should be maintained according to supplier's recommendations. A TCI technical representative must audit each application system to ensure products will meet the 2605 specification.



## TruDurance

### TCI Certified Applicator

TCI field technicians are trained to audit all aspects of the powder coating operation to determine the customer's ability to achieve AAMA requirements. TCI runs a variety of tests that evaluate the performance of our powder coatings in the customer's process and continues with bi-annual renewal audits to ensure the process parameters have not changed without notification. For TCI Certified Applicators, warranties are available for 2603, 2604, and 2605 applications.



ALUMINUM  
EXTRUDERS  
COUNCIL



300 Martin Marietta Drive, Americus, GA 31719

Phone: 800.533.9067 Fax: 800.265.0404 Web: [www.tcipowder.com](http://www.tcipowder.com)



**TCI**<sup>TM</sup>  
WHERE YOUR  
WORLD MATTERS

# TruDurance

Architectural Powder Coatings

**AAMA 2603**

**9000 Series**

**AAMA 2604**

**10000 Series**

**AAMA 2605**

**11000 Series**

To Order: 800.533.9067 • 229.937.5411  
For More Information: [www.tcipowder.com](http://www.tcipowder.com)



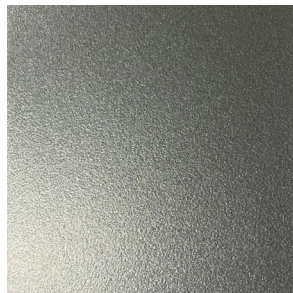
**TCI**<sup>TM</sup>  
WHERE YOUR  
WORLD MATTERS

TCI's TruDurance architectural powder coatings have outstanding long-term durability which includes excellent color and gloss retention. In addition, these products exhibit impressive corrosion, mar, and scratch resistance as well as over-bake stability on the applicators line. Our products are environmentally responsible and offer a great alternative to other coating options. The 10,000 series products are AAMA 2604 quality, 11,000 series are AAMA 2605 and products can be matched in TGIC-free chemistry at your request. TCI also offers quick turnaround times on color matches and small batch orders.

## Metallics



Bonded Silver 34 Metallic  
10311-02619  
11311-02612



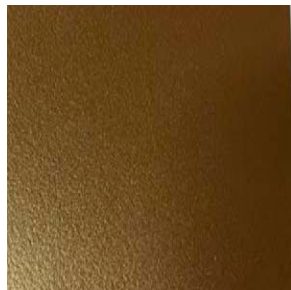
Bonded Grey Metallic  
10211-02620  
11311-02617



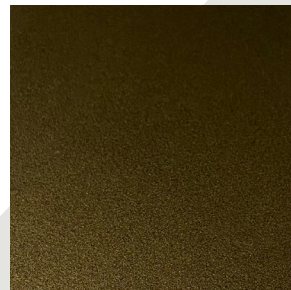
Bonded Charcoal Metallic  
10311-02621  
11411-02613



Bonded Gold Metallic  
10211-02623  
11311-02616



Bonded Bronze Metallic  
10211-02622  
11311-02615



Bonded Dark Bronze Metallic  
10311-02625  
11411-02614



# Solids



White  
10710-91840  
11710-92950



New Bone White  
10510-91922A  
11510-92253R



Satin Creme  
10410-12088  
11410-92949



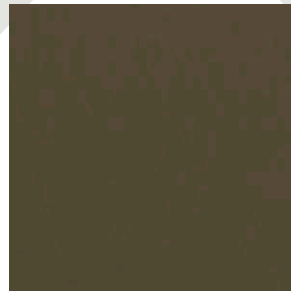
Beige  
10610-12080  
11610-13242



Sandstone  
10510-12082  
11510-12146



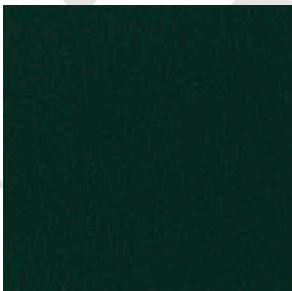
Slate Grey  
10410-74084  
11410-74113



Toffee  
10510-81101  
11510-81964



Teal  
10310-61545  
11310-62192



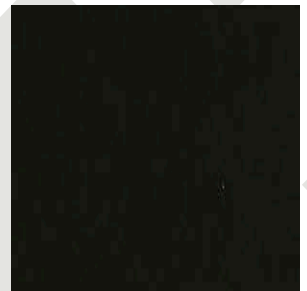
Holly Green  
10410-62009  
11410-62073



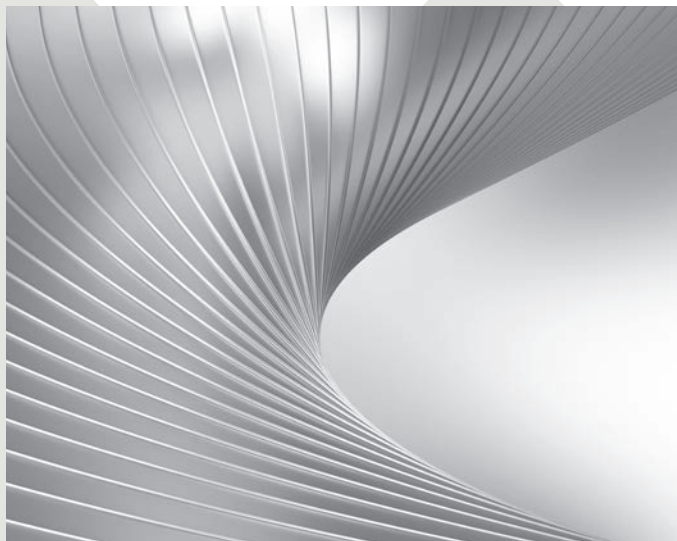
Redwood  
10410-30668  
11410-30698



Dark Bronze  
10410-81104  
11410-81999



Coal Black  
10410-92910  
11510-92940



This color card is for reference only and slight variations between colors shown here and the actual product may exist.



### Anodized

### Textures



Bonded Anodized Champagne LR  
100110-01993



Bonded Anodized Lt Bronze LR  
100110-01991



Bonded Anodized Dk Bronze LR  
100110-01992



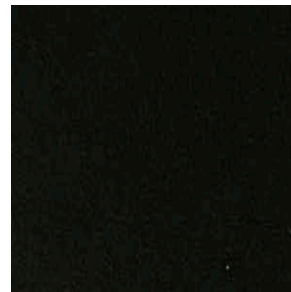
White Texture  
10012-93268



Anodized Dk Bronze  
10010-82174



Bonded Anodized Clear II  
101110-01987



Anodized Black  
10010-93242



Black Texture  
10012-91616