



**TCI**<sup>TM</sup>  
WHERE YOUR  
WORLD MATTERS

# TCI Stock Color Card

To Order: 800.533.9067 • 229.937.5411  
For More Information: [www.tcipowder.com](http://www.tcipowder.com)

# TCI Product Series

## 1000 Series

### Low Cure Systems

Formulated for heat sensitive substrates, these products were developed to cure at 250 F. Lower temperatures are also possible. Powder can be applied with or without minimal substrate preheating and are best suited for interior applications. Products in this series are not recommended for outdoor exposure. Loss of gloss and chalking will occur when exposed. These products feature excellent physical and chemical resistance properties. Typical uses include medium density fiberboard (MDF), fiber reinforced plastic (FRP), and sheet molding compound (SMC) substrates. Each customer's substrate and application technology must be evaluated before ordering powder.

## 2000 Series

### Acrylic Systems

These products have a broad formulating range and are capable of meeting many decorative application requirements. Products in this series can have increased hardness, chemical resistance, overbake resistance, smoothness and weatherability when compared to standard systems. Products can be formulated for interior and exterior applications. Contact a TCI sales representative or chemist to determine suitability of this technology.

## 3000 Series

### High Temperature Systems

Formulated with heat resistant silicon resin to provide coating stability, adhesion, color, and gloss retention in elevated temperature applications, these products are suitable for different levels of continuous or intermittent temperature exposure. Contact a TCI chemist to initiate a product design for high temperature applications.

## 4000 Series

### Specialty Systems

Developed with TCI's proprietary resin technology, this series of powder coatings provides a broad formulating range for decorative or functional uses when conventional technology will not meet a customer's demanding application and performance requirements. Please contact a TCI Account Manager to initiate a product design for your challenging application.

## 5000 Series

### Alternative Cure Polyester Systems (Non-TGIC)

Formulated to meet many decorative requirements for gloss, smoothness, color and weatherability, these products can provide solutions where TGIC containing Polyester or Urethane Polyesters are not approved. Typical uses include interior and exterior furniture, sports equipment, and machinery. TGIC free is available in Standard Durable and Super Durable chemistries. Please contact a TCI Account Manager to discuss the advantages of using this chemistry.



Property	1000	2000	3000	4000	5000	6000	7000	8000	9000	10000	11000
Hardness	E	E	G	VG-E	VG	VG	E	G	VG	VG	VG
Flexibility	E	P	G	VG	E	E	E	E	E	E	E
Overbake Stability	P	E	E	VG	E	VG	P	G	E	VG	VG
Exterior Durability	P-E	P-E	P-E	P-E	E	P	P	E	E	S	HP
Corrosion Protection	E	VG	G	E	VG	VG	E	VG	E	E	E
Chemical Resistance	E	E	G	VG	VG	VG	E	G	VG	VG	VG
Application Properties	VG	G	G	VG	E	E	E	G	E	VG	VG

P=Poor G=Good VG=Very Good E=Excellent S=Superior (AAMA 2604) HP=Highest Performance (AAMA 2605)

Interior Applications- 1000, 2000, 3000, 4000, 6000, 7000,  
Exterior Applications- 2000, 3000, 4000, 5000, 8000, 9000, 10000, 11000

## 6000 Series

### **Epoxy/Polyester Hybrid Systems**

These products have a broad formulating range that can meet many decorative and functional application requirements. Yet, they can rapidly lose gloss and begin to chalk when exposed to sunlight, making them best suited for interior applications. This series has a good balance of physical properties, smoothness, gloss and excellent application characteristics that allow for lower film thickness. Typical uses include automotive accessories, exercise equipment, power tools, office furniture, shelving and display racks.

## 7000 Series

### **Epoxy Systems**

Products in this series are best suited for applications requiring superior adhesion, corrosion and chemical resistance. Ideally suited for interior applications as they can rapidly lose gloss and begin to chalk when exposed to sunlight. Epoxy systems can be formulated to have excellent physical properties such as hardness and flexibility. Typical uses for this product series include automotive underbody, corrosion resistant primers, lighting, racking, and material handling equipment.

## 8000 Series

### **Urethane Systems**

These products meet many decorative requirements for gloss, smoothness, color, and weatherability. They are formulated for use in interior and exterior thin film applications that deliver excellent film properties such as hardness, adhesion, flexibility, chemical and corrosion resistance. Most products in this series are not suitable for high film build. Typical applications include lighting fixtures, automotive trim, interior auto components, home appliances, and interior/exterior furniture.

## 9000 Series

### **TGIC Polyester Systems**

These products have the broadest formulating range in color and gloss, and many will meet or exceed AAMA 2603 performance requirements. The work horse of the industry, this series can be used in interior or exterior applications, and provides excellent flexibility, impact resistance, and application properties. Typical uses include aluminum extrusions, playground equipment, light fixtures, heavy duty machinery and equipment.

## 10000 Series

### **Superior Exterior TGIC Polyester Systems**

Products within this series are formulated high performance resins and pigments to meet AAMA 2604 specifications and are available in a wide selection of colors in a wide gloss range. Designed for exterior applications, this series provides excellent film and performance properties for gloss and color retention, chemical and salt resistance, impact and flexibility. Applications may include windows, doors, store fronts, playground equipment, cladding components, park furniture, fences and railings, light fixtures and poles, and more.

## 11000 Series

### **Highest Exterior Organic Systems**

Formulated to meet AAMA 2605 specifications using fluoropolymer resin, products in this series have highest exterior durability in the industry. They have superior gloss and color retention and come in a variety of gloss levels and colors. When you desire superior exterior durability, color and gloss retention; look no further than TCI's 11000 Series platform of products. Proper amorphous chromium phosphate or amorphous chromate pretreatment is critical to ensure product performance. A TCI technical representative must audit each application system to ensure products will meet the 2605 specification.

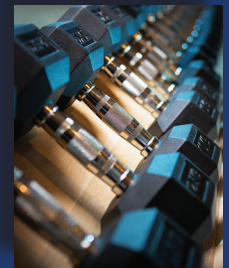
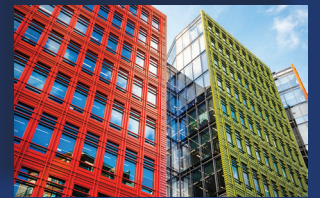
## TCI Colors in Stock and Ready to Ship

TCI stocks hundreds of products available in a variety of colors, textures, and effects ready to ship to you at a moment's notice. Along with the products in this color card, other stock color options include TCI's TruDurance™ Architectural Powder Coatings, which meet AAMA 2603, 2604, and 2605 specifications, as well as our fast cure, super durable RAL colors.

TCI has developed innovative technology platforms that offer you a complete range of powder coating options designed to give you the performance, quality, and value you expect. Our product portfolio is suitable for those markets that require a durable yet beautiful powder coating finish.

TCI's product lines include TruBond™ and TruBond™ Plus Bonded Metallic Coatings, TruIllusion™ Special Effects Coatings, TruZinc™ Primer Coatings, as well as TruDurance™ and TruAnodize™ Architectural Powder Coatings.

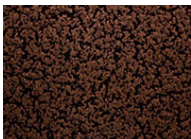
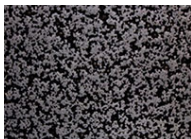




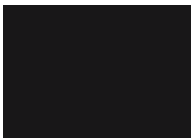
Visit TCI's Online Color Selector to get an electronic view of hundreds of colors. Select the color, environment, and finish to find the perfect product for your needs. \*Please note that colors in the selector might not be perfectly accurate due to variations of how colors are displayed on computer monitors.














6000 SERIES EPOXY POLYESTER HYBRIDS

					
6920-9031 Arctic White	6920-91067 Universal White	6820-9189 Cabinet White	6820-1065 Antique White	6720-90335 Oyster White	6720-9262 Cabinet Beige
					
6820-1060 Almond	6920-1229 Piedmont Almond	6720-1062 Champagne	6550-71817 Lowes Gray 300 II	6820-7059 Circuit Gray	6720-7050 Mercury Grey
					
6132-7047 Fog Gray	6620-7530 RAL 7040 Gray	6820-1147 Brite Yellow	6820-2004 RAL-2004 Pure Orange	6820-3063 Fire Red	6820-3044 Winchester Red
					
6820-5061 Cobalt Blue	6530-73179 Walmart Gray II	6420-9540 45 Black	6920-9000 Channel Black	6550-9000 FC 50 Black	

7000 SERIES EPOXIES

					
7334-0060 Copper Vein	7334-0065 Silver Vein	7010-9236 JA6AXXJ Flat Black	7010-9000 Flat Black	7110-9000 10 Black	7210-9000 Trans Black
					
7830-9000 Auto Chassis Black	7420-90147 40 Black Epoxy				

8000 SERIES URETHANES

					
8810-9074 Furniture White	8400-9053 Satin White	8810-7097 Tropic Gray	8300-7087 61 Gray	8810-10577 Goldenrod	8910-3067 Blood Red
					
8000-9000 Dash Black	8200-9000 Satin Black	8510-9000 Universal Black	8702-9000 JASAXXG	8910-9000 Gloss Black	



Follow us on social media to see how these colors are utilized!

WRINKLES, PEELS, TEXTURES



6132-1056  
Almond Tex



6032-9000  
Black Tex



6223-9000  
Black Peel



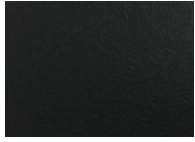
6232-9044  
White Tex



6323-9037  
White Peel



7002-9291  
JA6A TEX



7027-92790  
Casino Black Epoxy Wrinkle



8017-91612  
DF Black Wrinkle III



8027-51311  
Surf Blue Wrinkle



8027-81460  
Coffee Brown Wrinkle



8027-92251  
CA Black Wrinkle



9002-9324  
JA6A TEX Polyester



9313-92513  
SD Dixie Black Peel



9042-90137  
LC Black Tex



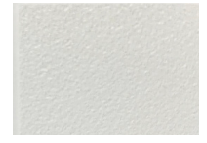
9313-9000  
Poly Black Peel



9243-91713  
LC Poly Black Peel



9333-91262  
Sky White Peel



9122-90909  
Sky White Tex



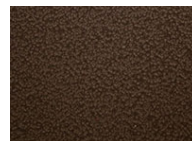
9122-71158  
Poly RAL 7035 Tex



9313-9062  
Poly White Peel



9012-9000  
Tex Black



9315-01811  
Brown Hammer



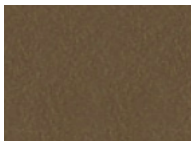
9315-92132  
Dark Pewter Hammer



9215-01910  
Silver Rock Hammer



100110-01993  
2604 Anodized  
Champagne LR



100110-01991  
2604 Anodized  
Lt. Bronze LR



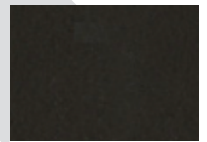
100110-01992  
2604 Anodized  
Dk. Bronze LR



10010-92370  
2604 Anodized  
Dk. Bronze DR



10110-01987  
2604 Bonded  
Anodized Clear



10010-92369  
2604 Anodized  
Black



7820-12396  
Beige Primer OGF



7010-71529  
SAM Primer Gray



7520-70138  
Zinc Rich Primer



8510-7833  
HH Gray Primer



7760-3931  
LC Red Oxide Primer



8210-91232  
HH Black Primer



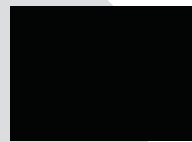
9920-12085  
CNH Power Tan



9920-72188  
CNH CE Gray



9420-91835  
CNH Black



9720-91950  
CNH Black Primer



9920-72190  
CNH Dark Gray



9920-51087  
CNH NH Blue



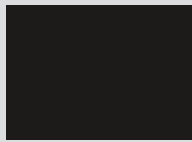
9840-60728  
FC SD JD AG Green



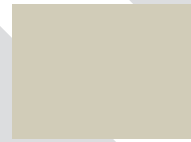
9210-90663  
SD Cat Black



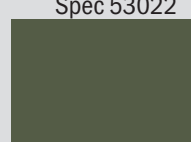
9910-10503  
SD Cat Yellow



9350-91614  
FC SD JD Black



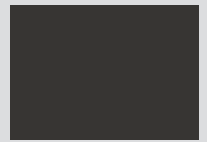
7820-71737  
Epoxy Primer Mil  
Spec 53022



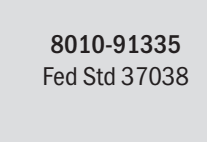
8010-60063  
Fed Std 34094 Green



8800-92213  
Crystal Eraser White



8010-10828  
Fed Std 33446



8010-91335  
Fed Std 37038

TRU ANODIZE  
AAMA 2604


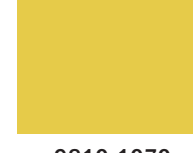
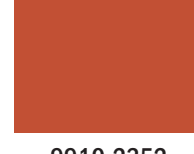


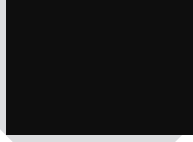
PRIMERS

AG & CONSTRUCTION

ERASE

FEDERAL STANDARDS

9000 SERIES TGIC POLYESTERS

					
<b>9910-9035</b> Crystal White	<b>9910-9897</b> Sky White II	<b>9910-9741</b> Brite White	<b>9610-9021</b> Pompano White	<b>9910-1045</b> Pasta	<b>9510-92706</b> Patio White
					
<b>9820-12266</b> Miracle Almond	<b>9810-1048</b> Sandlewood	<b>9810-1049</b> Mesa Tan	<b>9810-7042</b> Elec. Gray/ASA 70	<b>9510-70039</b> Super Gray 61	<b>9610-7040</b> Storm Gray
					
<b>9530-70200</b> HPC 61 Gray	<b>9900-7111</b> WIN Gray	<b>9820-7146</b> Accuride Gray	<b>9610-71307</b> ANSI Gray 49 Poly	<b>9610-73080</b> SD Array Gray	<b>9810-1070</b> Golden Yellow
					
<b>9810-1268</b> Safety Yellow	<b>9810-2113</b> Sonny Orange II	<b>9840-2461R</b> ▲ Safety Orange	<b>9910-2352</b> October Orange	<b>9810-3042</b> Ruby Red	<b>9910-3921</b> Chili Pepper
					
<b>9810-6046</b> Ivy Green	<b>9910-5067</b> Azure Blue	<b>9810-5413</b> Bahama Blue	<b>9910-5054</b> Ocean Blue	<b>9316-8644M-2</b> Java II	<b>9910-8036</b> Dark Sienna
					
<b>9611-01069</b> SD Statuary Bronze	<b>9030-90922</b> SD Flat Black	<b>9930-92357</b> LC SD Novae Black II	<b>9350-91411</b> Fast Cure Matte Black	<b>9510-91039</b> SD Mineral Black	<b>9310-90160G</b> SD Black Polyester
					
<b>9310-90278-2</b> Satin Black Polyester	<b>9320-92439</b> New LC Poly Satin Black	<b>9510-92337</b> Echo Black	<b>9510-91410</b> Lava Black	<b>9710-9000</b> Cargo Black	<b>9740-90637</b> Super Slip Black II
					
<b>9910-9845</b> SD Accuride Black II	<b>9910-9000</b> Shuttle Black	<b>9910-9845HF</b> HF SD Accuride Black II			

CLEAR

<b>8910-0231</b> ■ Anti-Graffiti 90 Clear	<b>9310-01308</b> ■ SD 40 Clear	<b>9910-0000</b> ■ 90 Clear	<b>9950-9897</b> FC Sky White II	<b>9950-9000</b> FC Shuttle Black	<b>9540-91709</b> FC Lava Black II
<b>9030-01311</b> ■ SD 10 Clear	<b>9710-01307</b> ■ SD 70 Clear	<b>9910-01289</b> ■ SD 90 Clear	<b>9550-9000</b> FC SD Lava Black	<b>9940-30293</b> FC SD Red Baron	

FAST CURES

METALLICS



PRODUCTION FORMULATION

First Number = Resin Type

- 9801-1000 (example) 7 = Epoxy
- 1 = Low Cure 8 = Urethane
- 2 = Acrylic 9 = TGIC
- 3 = High Temperature 10 = AAMA 2604
- 4 = Specialty 11 = AAMA 2605
- 5 = Alt. Cure
- 6 = Hybrids

Second Number = 60° Gloss Reading

- 9801-1000 (example)
- 0 = 0-9
- 1 = 10-19
- 2 = 20-29
- 3 = 30-39
- 4 = 40-49
- 5 = 50-59
- 6 = 60-69
- 7 = 70-79
- 8 = 80-89
- 9 = 90+

Third Number = Cure Response

- 9801-1000 (example) Time at metal temp for full cure
- 0 = 12 min. @ 400° F
- 1 = 10 min. @ 400° F
- 2 = 10 min. @ 375° F
- 3 = 10 min. @ 350° F
- 4 = 10 min. @ 325° F
- 5 = 10 min. @ 300° F
- 6 = 10 min. @ 275° F
- 7 = 10 min. @ 250° F
- 8 = Fast Cure - See TDS for recommended cure

Fourth Number = Surface Appearance

- 9801-1000 (example)
- 0 = Smooth
- 1 = Metallic
- 2 = Sand
- 3 = Orange Peel
- 4 = Vein
- 5 = Hammertone
- 6 = Multi-Color
- 7 = Wrinkle

Last Series Corresponds to RAL Color System

- 9801-1000 (example)
- 0 = Clears & Metallics
- 1 = Yellows & Beiges
- 2 = Oranges
- 3 = Reds
- 4 = Violets
- 5 = Blues
- 6 = Greens
- 7 = Grays
- 8 = Browns
- 9 = Blacks and Whites

Clear Coat and Fill Quantities

- = Clear Coat Recommended for Maximum Durability
- = 45 lb Fill Quantity
- ▲ = 25 lb Fill Quantity

Shipped in 55 lb Boxes Unless Otherwise Noted



# North American Locations



- ★ **Americus, GA** – Corporate Headquarters & Product Development
- ★ **Ellaville, GA** – Manufacturing
- ★ **Burlington, Canada** – Product Development & Manufacturing

*The Value of*  
**168**<sup>®</sup>

The Value of 168 is the corporate philosophy of RPM. This figure, often cited by RPM's founder, Frank C. Sullivan, represents the number of hours in a week. On a deeper level, it serves to remind RPM and its subsidiaries of his belief that they are born with two great gifts: life and time to do something meaningful. The Value of 168 signifies RPM's enduring commitment to fellow employees, subsidiaries, customers, and stockholders.

## Warehouses

- ★ **Baltimore, MD**
- ★ **Indianapolis, IN**
- ★ **Burlington, Canada**
- ★ **Itasca, IL**
- ★ **Carrollton, TX**
- ★ **Monterrey, Mexico**
- ★ **City of Industry, CA**
- ★ **Nixa, MO**
- ★ **Ellaville, GA**
- ★ **Paragould, AR**
- ★ **El Paso, TX**
- ★ **Salt Lake City, UT**

TCI is a proud subsidiary of RPM International Inc. RPM is a multinational holding company, founded in 1947, with an entrepreneurial operating philosophy structured into subsidiaries. These subsidiaries manufacture and market various specialty coating brands and chemical product lines. RPM has 116 manufacturing facilities in 26 countries and employs approximately 13,000 people worldwide.



300 Martin Marietta Drive, Americus, GA 31719  
Phone: 800.533.9067 Fax: 800.265.0404 Web: [www.tcipowder.com](http://www.tcipowder.com)